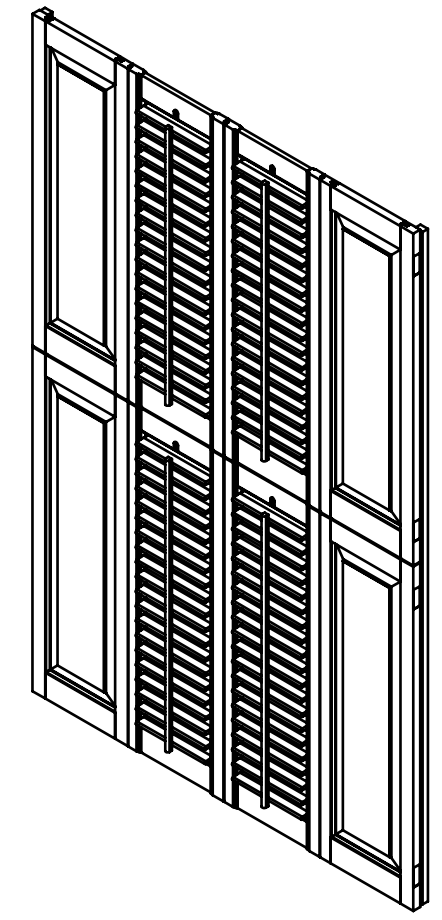
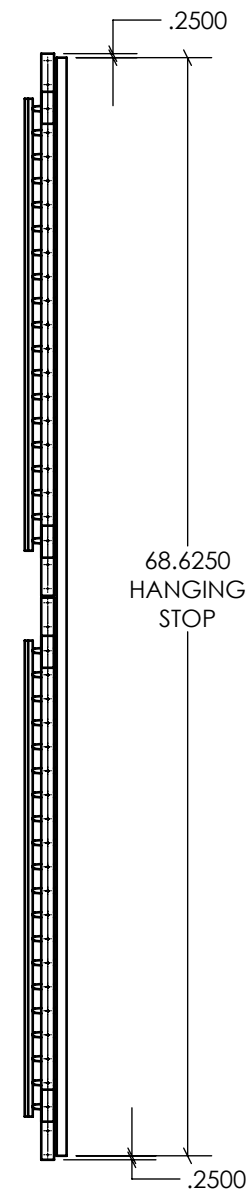
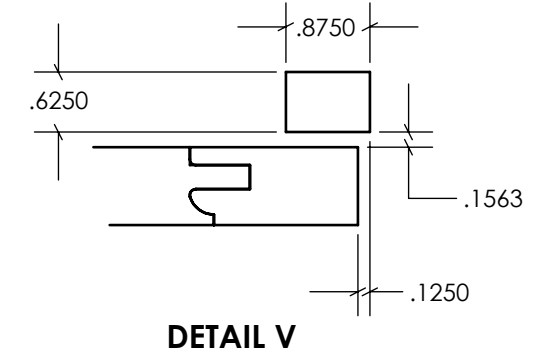
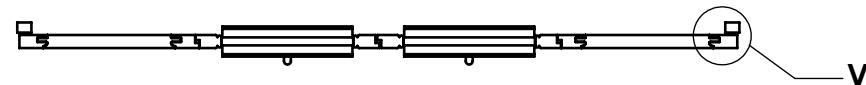
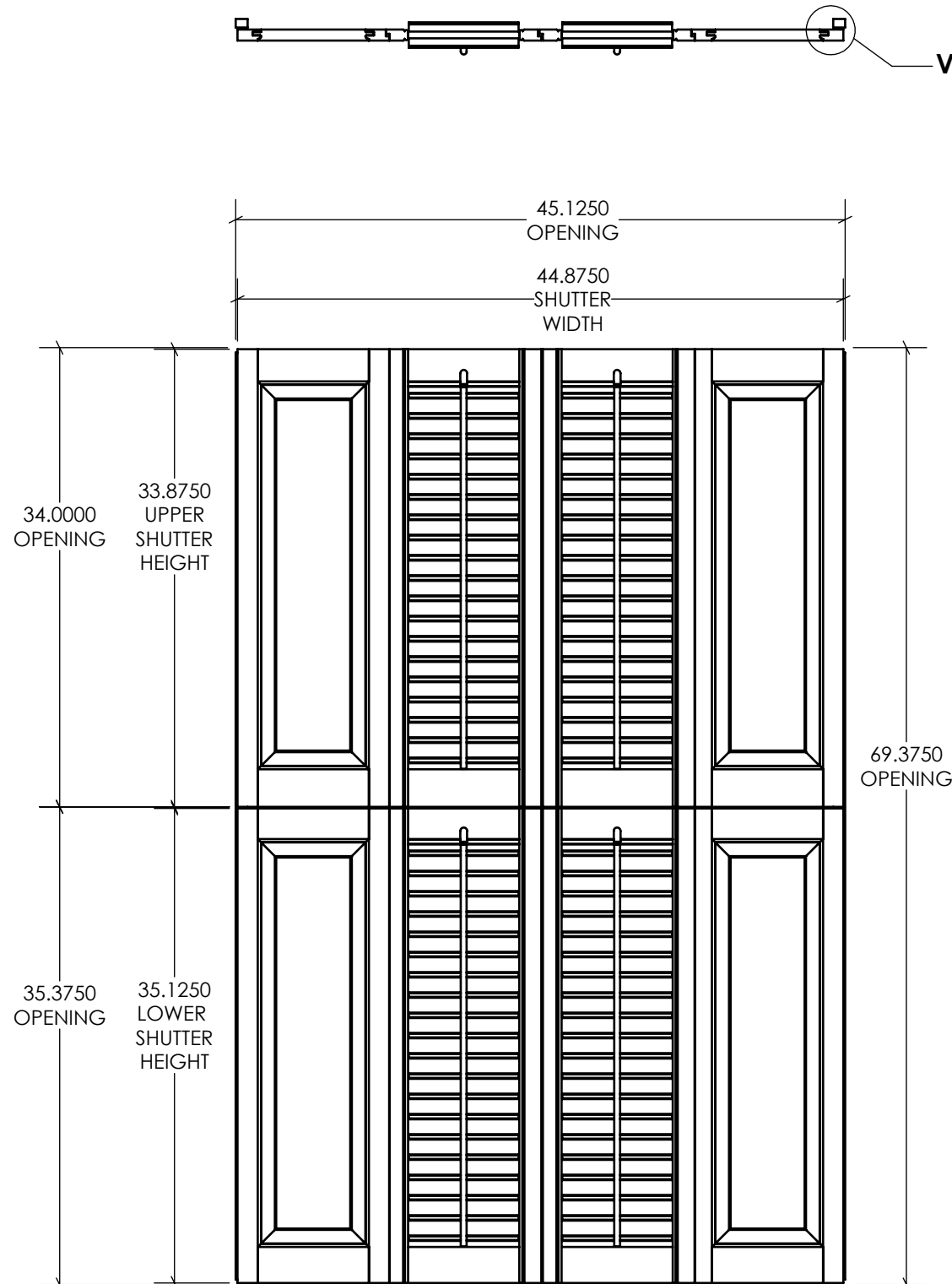


NOTES
STAINED TO MATCH REQUESTED COLOR

REVISIONS			
REV.	DESCRIPTION	DATE	DRAWN BY
A	INITIAL RELEASE		




Approval Signature _____

Date _____

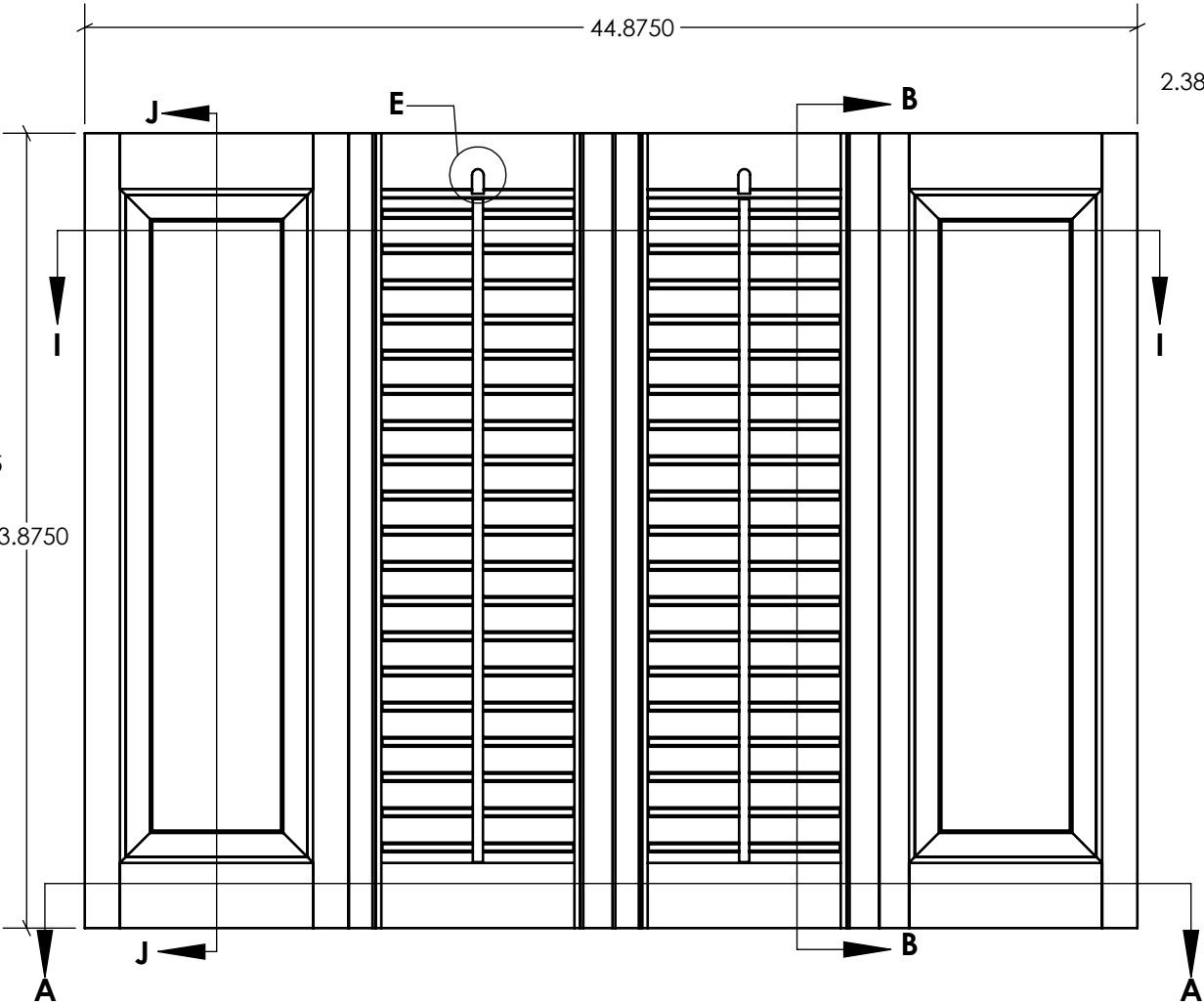
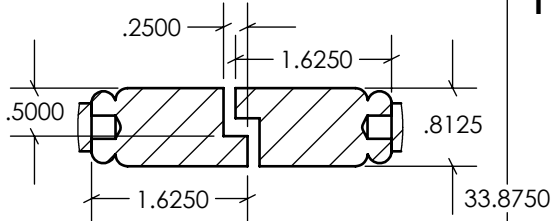
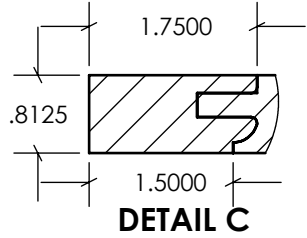
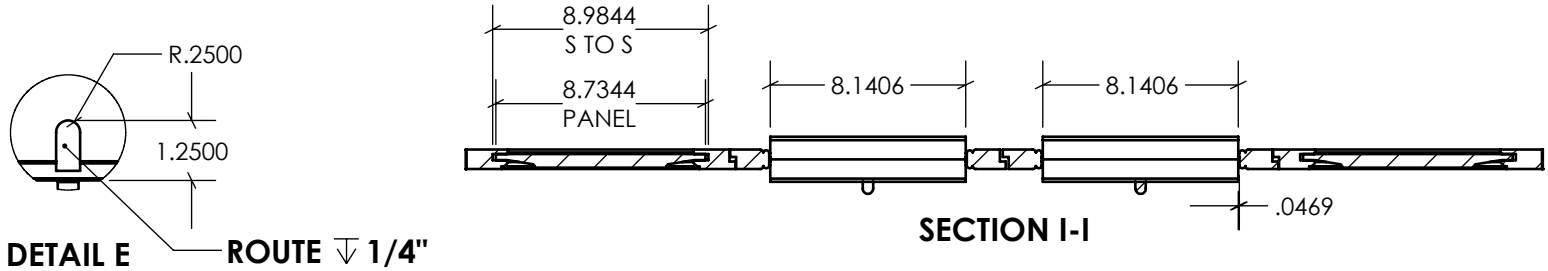
The signature (or AAN Stamp) on this print indicates the approval of the design, dimensions, and quantities shown. Authorization for this product to be manufactured is given.

*****ALL PARTS SHOWN ARE ADAMS STANDARD PROFILES*****
*****TWO DIMENSION REVISIONS ARE INCLUDED*****
*****ANY CHANGES TO PROFILES/PARTS WILL INCUR ADDITIONAL CHARGES*****

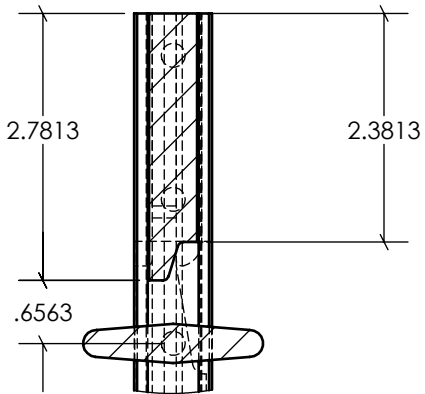
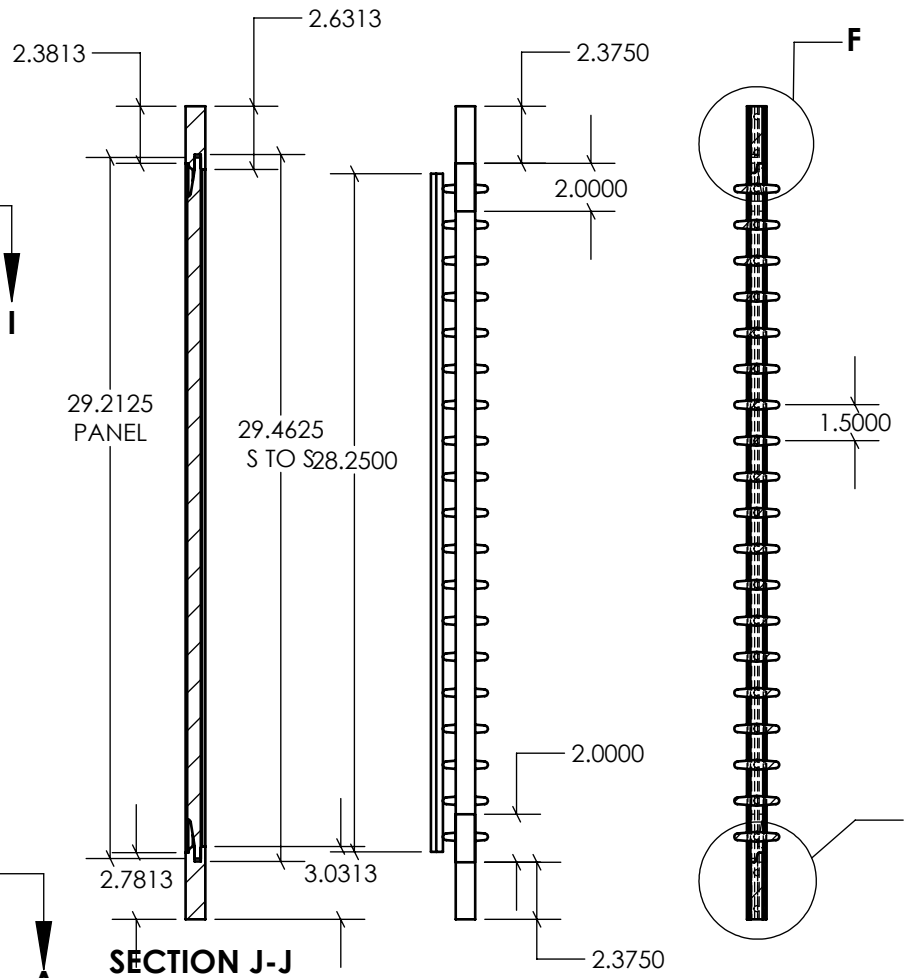
UNLESS OTHERWISE SPECIFIED DIMENSIONS ARE IN INCHES		2225 Kerper Blvd. Dubuque, IA 52001 563-690-1358 p 563-557-8852 f	
		Brownstone DH Shutters	
TOLERANCES:			
SHEET 1 OF 3	SIZE B		REV A

UPPER SHUTTERS

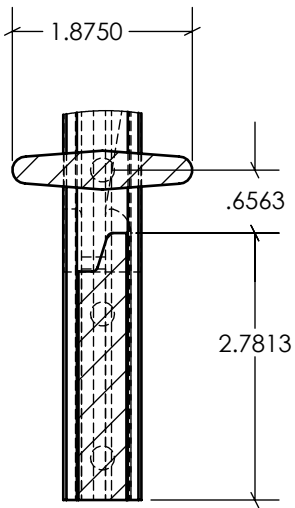
(LOUVER QTY = 19/PANEL)



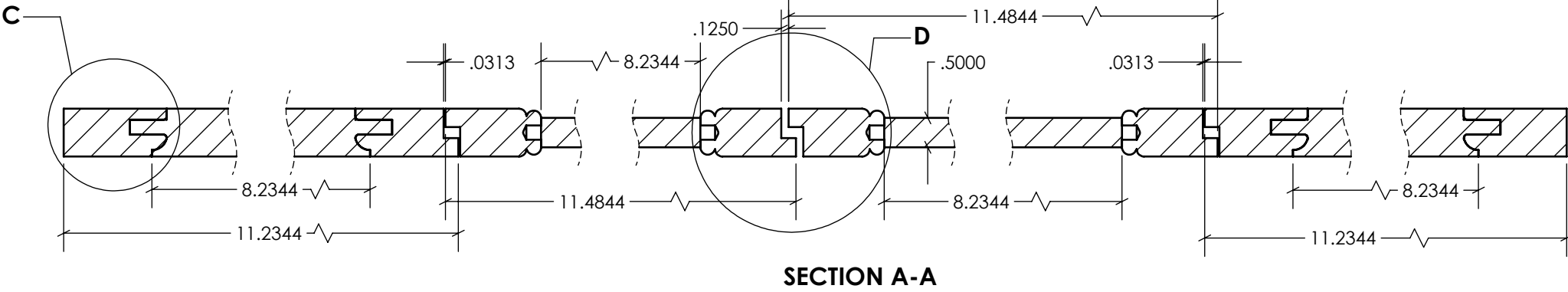
HINGE AND TILT CONTROL ROD DETAIL



DETAIL F



SECTION B-B



SECTION A-A

UNLESS OTHERWISE SPECIFIED
DIMENSIONS ARE IN INCHES
TOLERANCES:



DETAIL H
2225 Kerper Blvd.
Dubuque, IA 52001
563-690-1358 p
563-557-8852 f

Brownstone DH Shutters

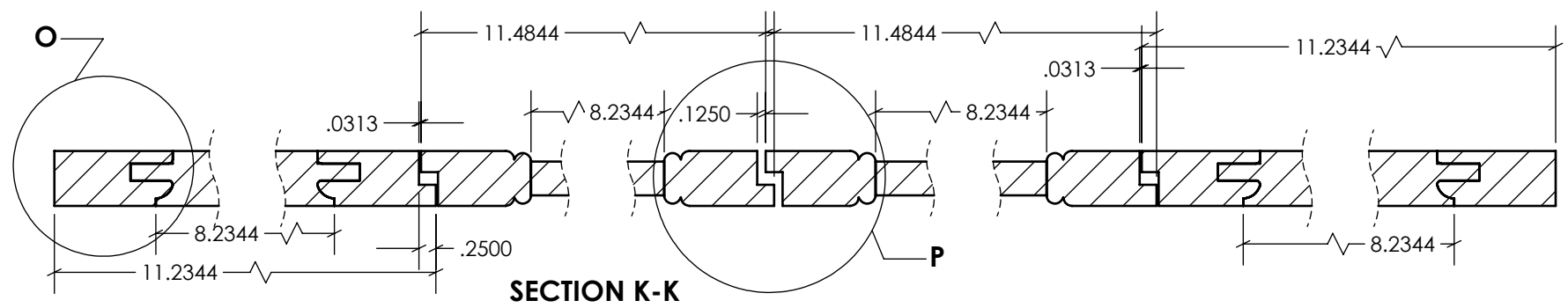
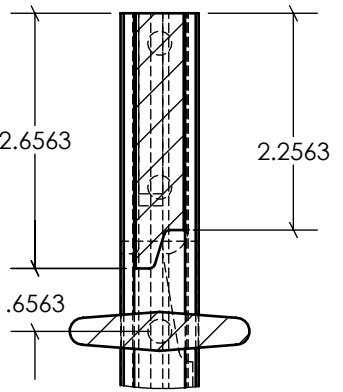
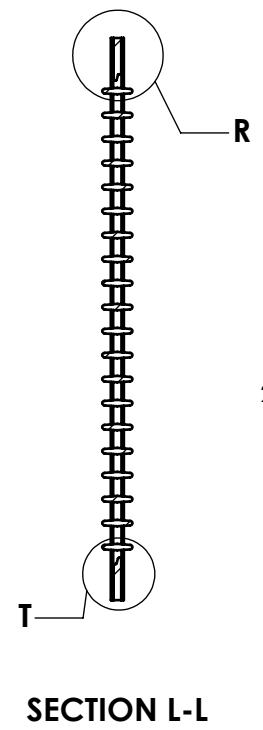
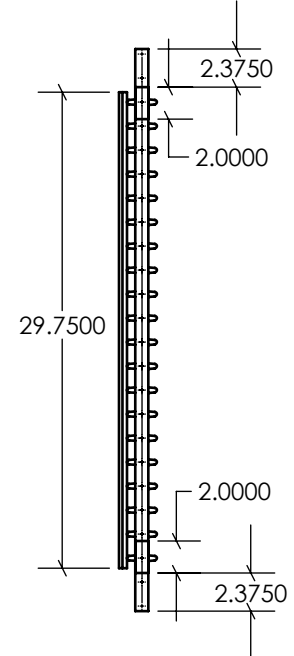
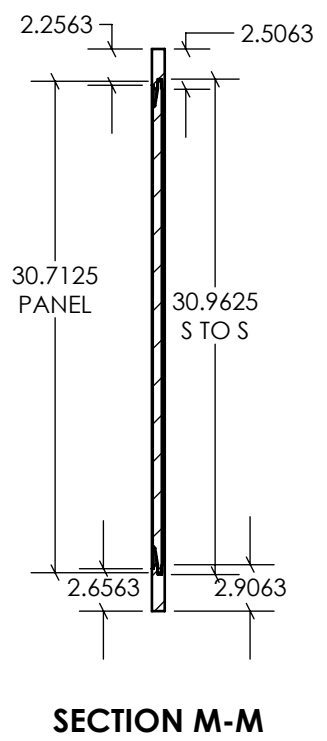
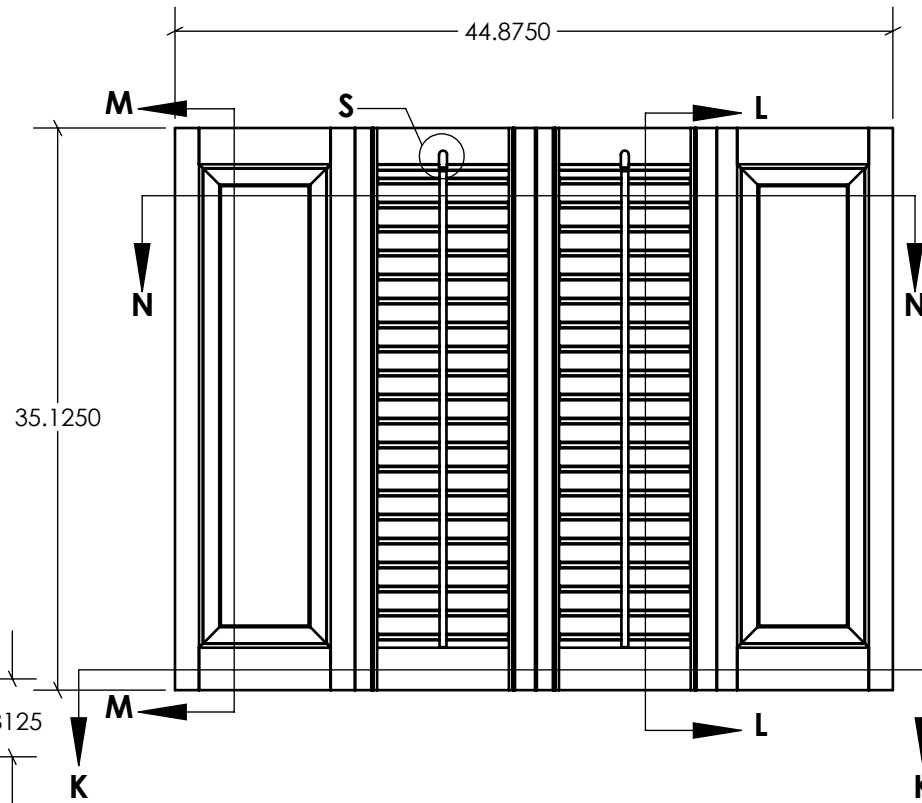
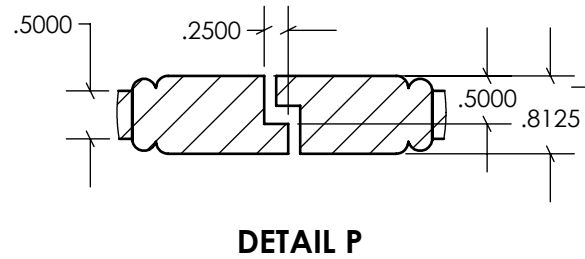
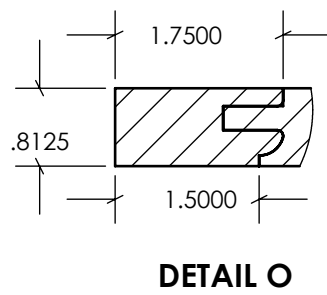
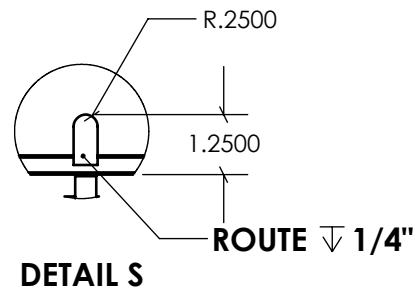
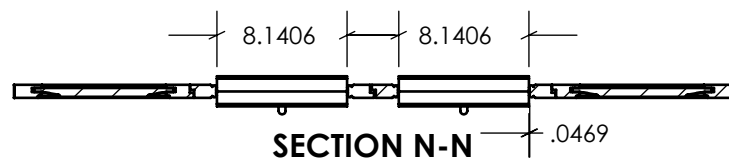
SHEET 2 OF 3


SIZE
B

REV
A

LOWER SHUTTERS

(LOUVER QTY = 20/PANEL)



UNLESS OTHERWISE SPECIFIED DIMENSIONS ARE IN INCHES		2225 Kerper Blvd. Dubuque, IA 52001 563-690-1358 p 563-557-8852 f	
		Brownstone DH Shutters	
TOLERANCES:			
SHEET 3 OF 3	SIZE B		REV A